



iMac Intel 20" EMC 2266 Hard Drive Replacement

Written By: Walter Galan



INTRODUCTION

Removing the hard drive.



TOOLS:

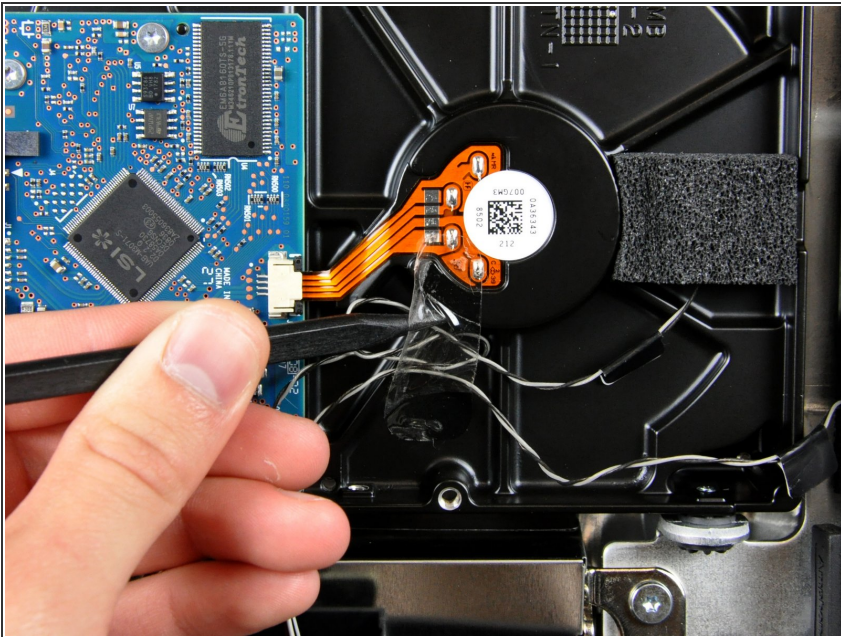
- [Spudger](#) (1)
-

Step 1 — Hard Drive



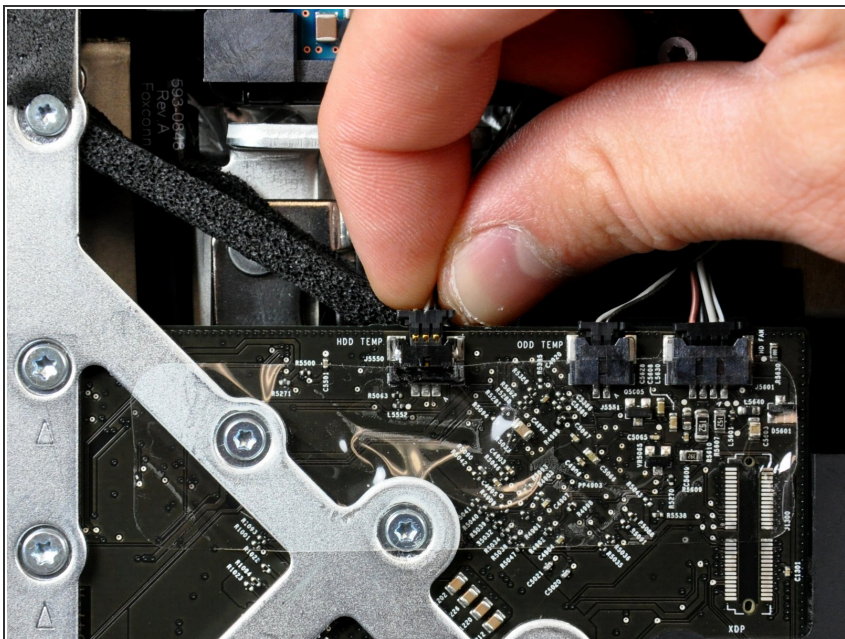
- To remove the hard drive bracket, squeeze the middle against the side of the hard drive while rotating the top left edge toward yourself.
- After the left edge has been freed, rotate the bracket toward the right edge of the hard drive.
- Lift the hard drive bracket straight up off the chassis.

Step 2



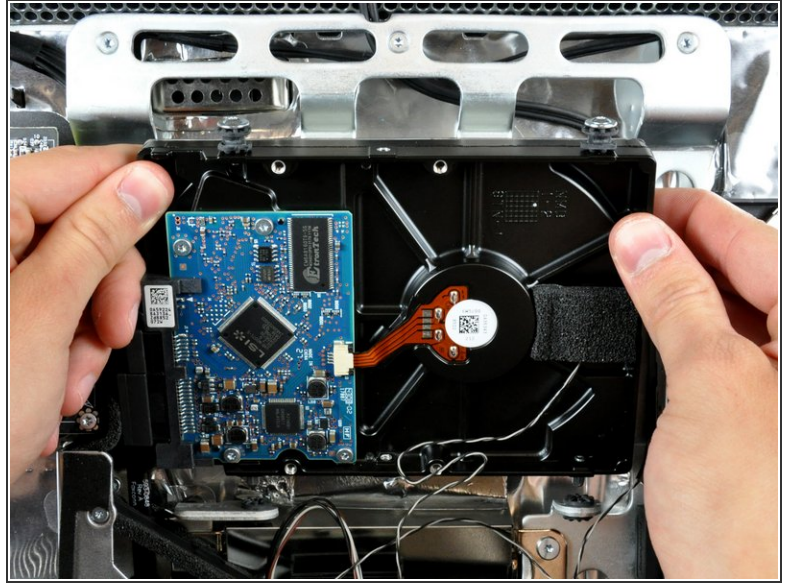
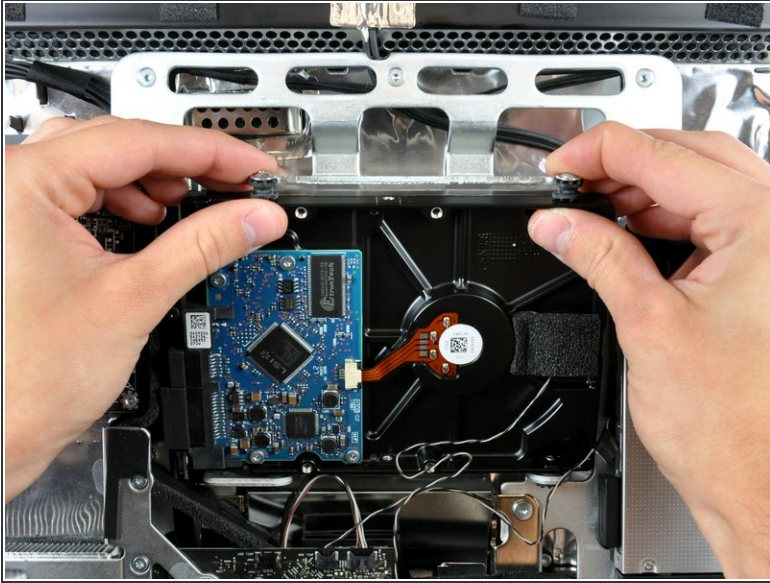
- If present, remove the small piece of tape covering the hard drive and optical drive temperature sensor cables.

Step 3



- Pull the hard drive temperature sensor cable straight away from its socket on the logic board.
- ⓘ When removing this connector, it is helpful use your thumbnails to push the ears on either side of the connector toward the top of your iMac.

Step 4

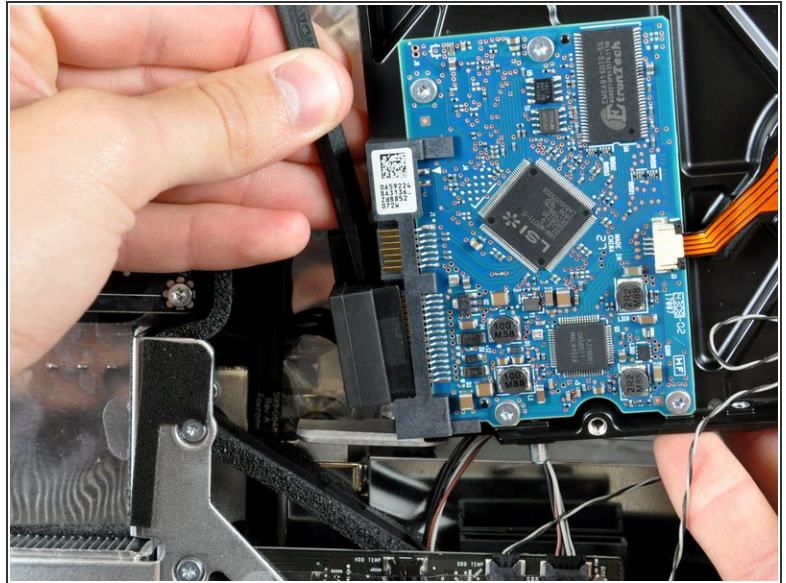
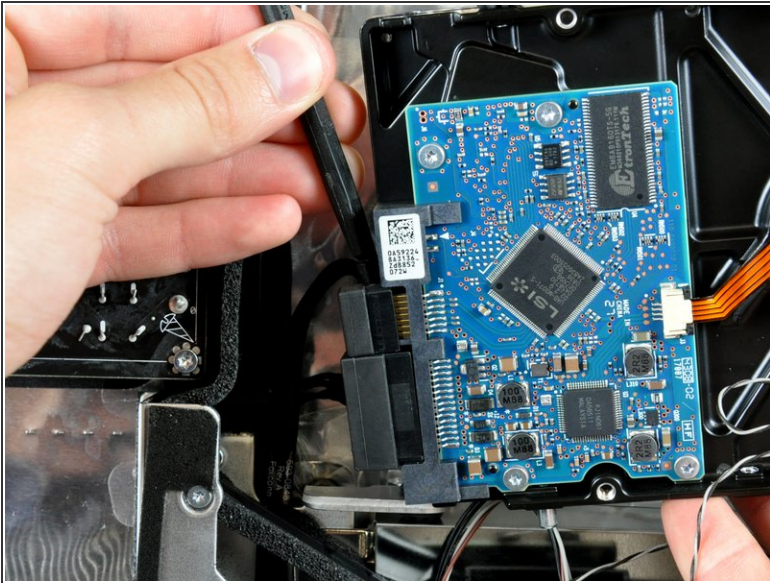


- Rotate the top of the drive toward yourself, then lift the hard drive straight up off its lower pins.

⚠ The hard drive is still connected via the SATA cables.

- 🔧 When reinstalling your hard drive, be careful not to push the rubber grommets through the openings in the chassis with the lower hard drive pins as retrieving them may require logic board removal.

Step 5



- Insert the flat end of a spudger between the SATA data cable and the edge of the hard drive.
- Twist the spudger to separate the SATA data cable from the hard drive.
- Disconnect the SATA data cable from the hard drive.
- ⓘ Repeat this process for the SATA power cable.
- Lift the hard drive out of your iMac, minding the thermal sensor cable that may get caught.

To reassemble your device, follow these instructions in reverse order.